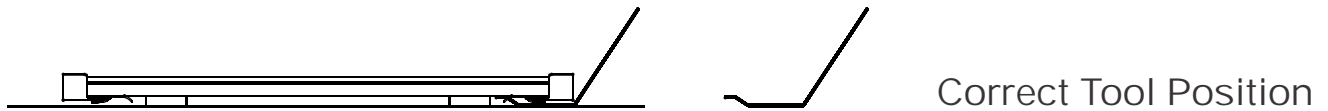


ALUMINUM GROUP OUTSERT® SIGNAGE INSTALLATION INSTRUCTION - LOCKING CLIP

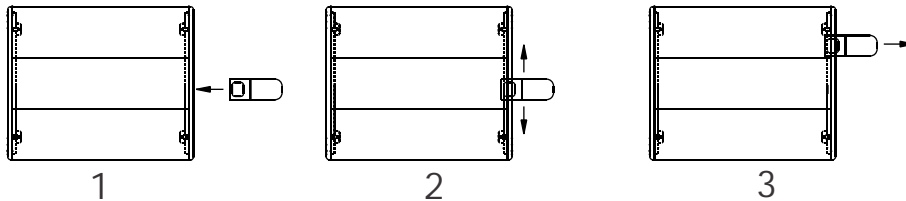
LOCATING THE LOCKING CLIPS: using the locking clip tool (p/n 100876), position the tool against the wall as shown and slide the tool under the end cap. Moving the tool up and down the side of the sign will locate the top and bottom locking clips.

REMOVING THE END CAPS: Once the locking clips are located, the tool must be slid under the clip to catch the far back lip of the clip. The square hole in the tool is intended to clear the clip on each side of the hole. Pull the tool (clip & end cap) out just far enough to disengage. Do the same at the other end of the end cap. Once both ends of the end cap are disengaged, remove the end cap.

INSTALLING THE LOCKING CLIP END CAP: align the top and bottom clips of the end cap with the notches in the aluminum backer and slide each clip to partially engage. Using the side of your hand (as shown) and holding the other side of the sign (if possible), push each end of the end cap on until the clips snap into place.

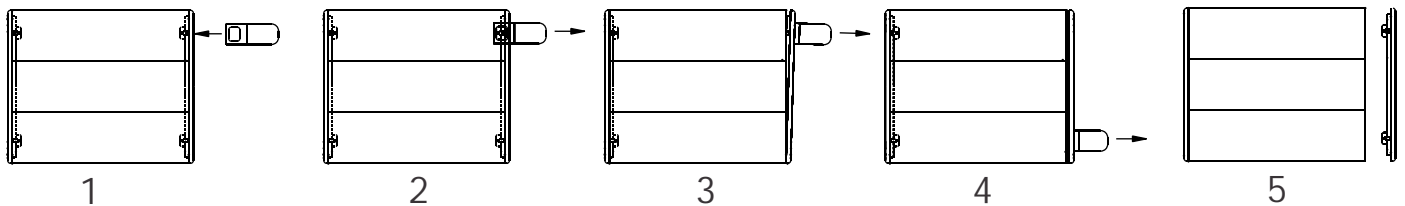


Locate Locking Clip



Removing End Cap with Locking Clip

NOTE: All locking clips must be disengaged (i.e pulled out 1/8") before removing end cap. DO NOT REMOVE END CAP AT JUST ONE CLIP LOCATION IF END CAP HAS MORE THAN ONE LOCKING CLIP.



Installing End Cap with Locking Clip

